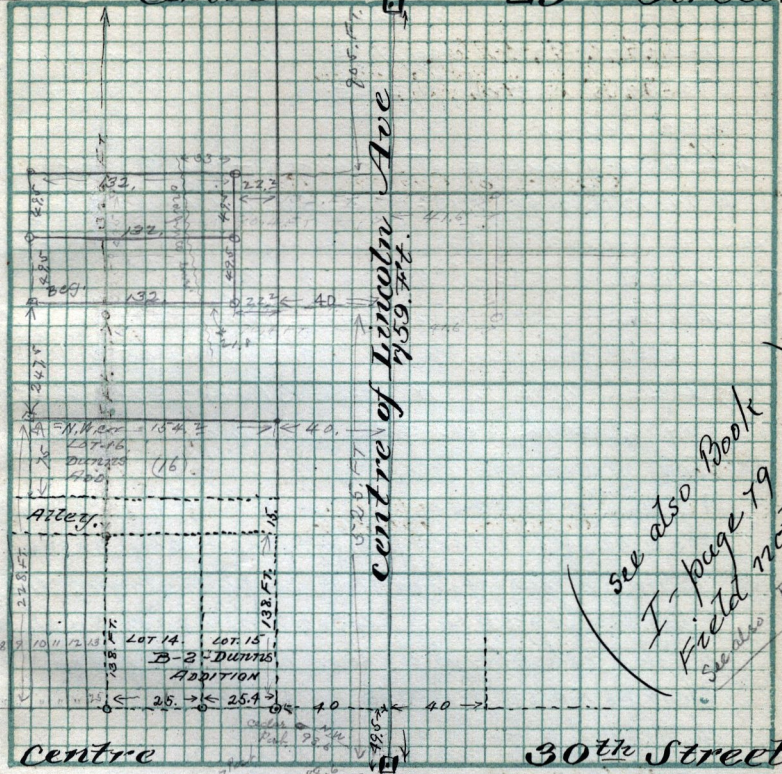


N.W. 61.25 ft. Fence post.
 N.E. 66.2 " " "
 S.E. 68.65 " " "
 W. 58.25 " " "

Centre

City Mt. 2 1/2 mi N. Lincoln
 77
 29th Street



see also Book
 I - page 19
 Field notes
 Book D - p 102

Centre

30th Street

Scale:

(B-3-)

Chains per inch

Survey made for N. Tanner jr. in South Ogden Survey, April 3rd 1891.

Part of B-10-S. O. S. - Beg 15 rods N. of N. W. cor Lot 16 - B-2 - Dunn's Add. N. 49.5 ft E. 132 ft S 49.5 N. 132 ft to beg. also a lot same dimensions immediately N. of above tract

John Baird - John Trayman, steel tape